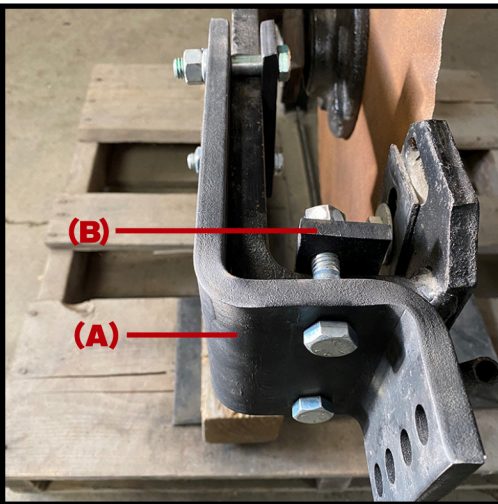


DiscSealers

MFG. BY GERBCO, INC.

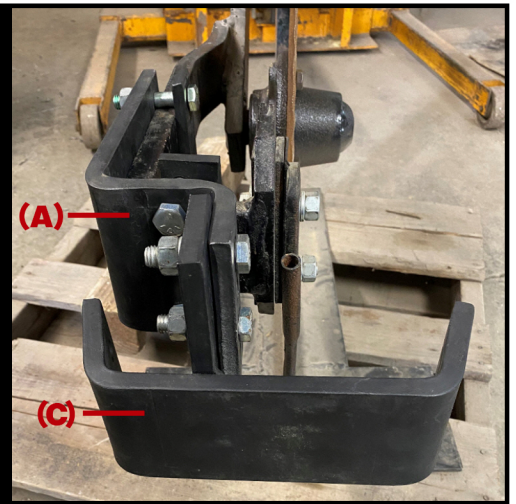
Assembly Instructions for Gerbco 28% Disc Sealers

STEP 1



Fasten large bracket (A) to 28% arm using (4) 1/2"x2-1/2" bolts. Place offset bracket (B) as shown.

STEP 2



Bolt disc bracket (C) to large bracket (A) using (2) 1/2"x2" bolts.
(Start by aligning top of brackets flush)

STEP 3



After placing 5/8"x2-1/2" bolt into disc blade, place lockwasher then flat washer (as shown) onto bolt before placing bolt into bracket (C). Tighten locknut.

STEP 4



Place both disc blades onto Bracket (C).
(Recommend starting in bottom hole)

keith@discsealers.com • 260-307-6257

www.discsealers.com